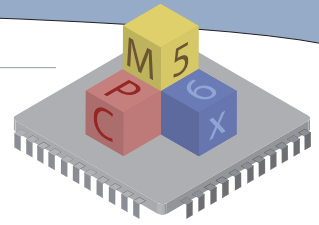




# QuantiPhi for MPC56x



With its powerful and flexible approach to interfacing with the processor, this blockset is unique to the industry. It's easy to use right out of the box for prototyping, but is also designed to be configurable enough to be used in production as well.

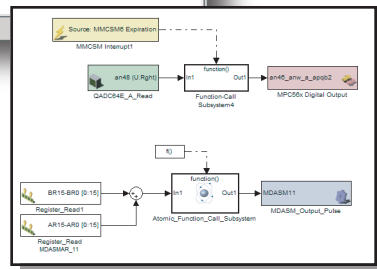
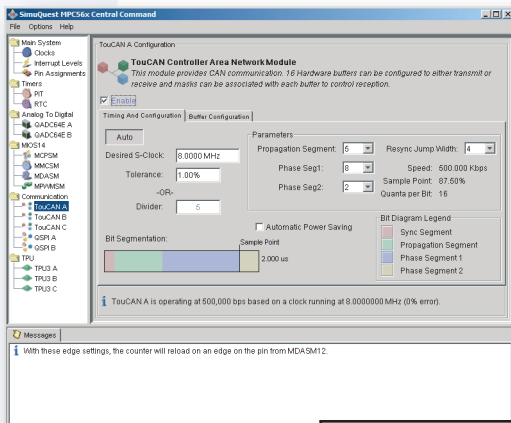
Bottom line: *No other target blockset supports as many features! No other blockset can take you to production like QuantiPhi!*

## Capabilities and Support

- PWM - 70 possible channels
- A2D - 40 channels
- TouCAN
- QSPI Modules
- All TPU abilities (even custom)
- Digital I/O - 100+ possible pins
- Real-Time Clock
- Periodic Interrupt Timer
- Modulus Counters
- Double-Action Submodules
- Painless clock adjustment
- Direct access to registers and memory

## Key Features

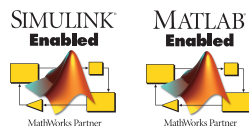
- **ConfigLink System Keeps Parameters Synchronized**  
*No worrying that a change in one area will break another!*
- **Automatic Parameter Setting**  
*This feature allows specification of times, frequencies, and speeds in engineering units-the register settings are automatic!*
- **Expression Folding Compliant**  
*Interface with the hardware with hand-code efficiency.*
- **Support for all ROM and Custom TPU Functions**  
*Build a native Simulink interface to your custom microcode with QuantiPhi's TPU blocks in minutes. DIO and PWM functions included.*
- **Sophisticated GUI interface**  
*Guides you in the configuration process graphically and with plain English interpretations of your settings.*
- **Programmatic Access to Configuration Values**  
*Allows you to build models that can handle changes in target configuration. For example, use this powerful feature to build dynamic models that incorporate timer periods and PWM frequencies.*
- **Seamless Scheduling**  
*Use rate monotonic scheduling the way you would in production. Run your application code synchronously outside of an interrupt!*
- **Flexibility to Fit Any Model Architecture**  
*Make your architecture as simple or as complex as is needed. QuantiPhi scales to the needs of your application.*
- **Full Access to All Relevant Interrupt Sources**



## Contact

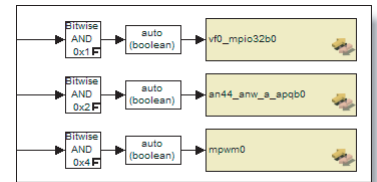
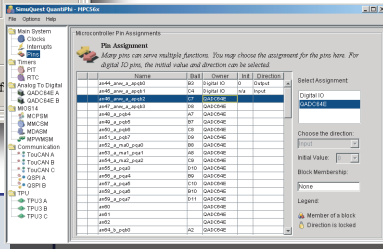
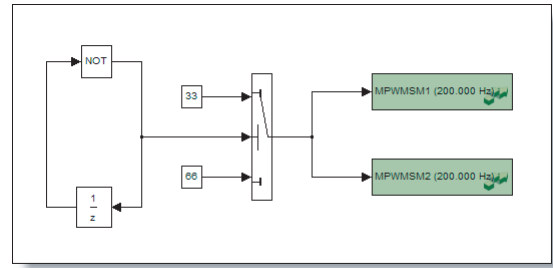
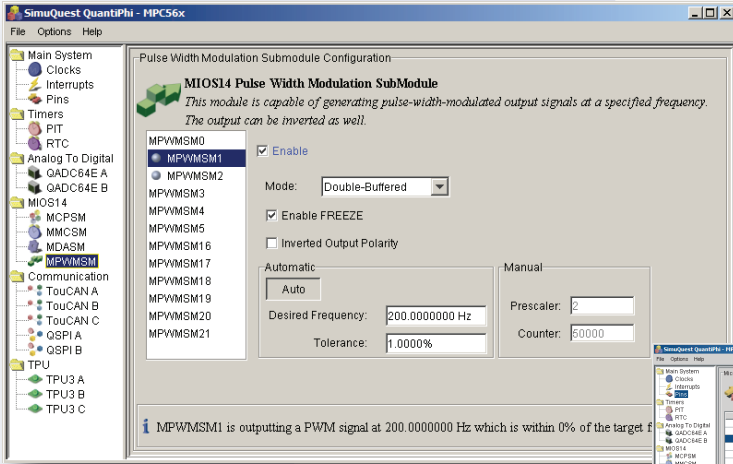
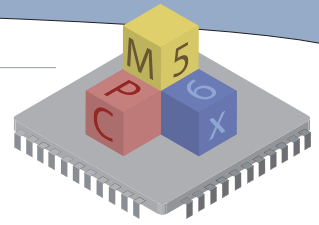
For product pricing, information, demos, or other inquiries:

Phone: (734) 426-8518  
 Mail: 4345 Crestline Drive  
 Ann Arbor, MI 48103  
 Email: [mpc56x@simuquest.com](mailto:mpc56x@simuquest.com)  
 Web: [www.simuquest.com](http://www.simuquest.com)





# QuantiPhi for MPC56x



### Configuration is easy!

Enter the desired periods and frequencies ... choose your pin functions in the configuration dialog. Each part of the GUI will tell you in plain English what will happen. Now use them seamlessly in the model. The model blocks automatically update.

### Complexity is Minimized!

ConfigLink manages all interactions between subsystems. You are alerted immediately if a problem achieving requested parameters arises.

### Additional Benefits

Full CAN driver, management layer, and Vector .dbc compatible message packing and unpacking blocks are included--a total communication solution!

Full QSPI reading and writing supported with management software auto-generated with the model.

Unparalleled access to all three powerful TPU modules. QuantiPhi easily interfaces even with custom microcode!

