

BalanceTalk™

Collect Data from any Balance

BalanceTalk software, from Labtronics Inc., increases the efficiency and accuracy of your weighing applications by capturing readings from any balance or scale equipped with an RS232 port.

- Eliminate manual data entry
- Eliminate transcription errors
- Transfer data directly into any Windows® program.
- Automate balance applications
- Includes Excel® spreadsheet templates

BalanceTalk is an easy-to-use solution for automation of weighing applications.

Easy to Install

BalanceTalk's simple fill-in-the-blank screens guide you through the setup in a matter of minutes. Simply follow these 3 short steps.

1. Select your balance from the list of balances supported by BalanceTalk. All of the major manufacturers and models are included in this list.
2. Enter your instrument information in the Instrument Protocol Setup dialog box.
3. Enter any commands that your balance responds to in the Instrument Command Setup dialog box.

You are now ready to start collecting data.

Ready to Use for Common Weighing Applications

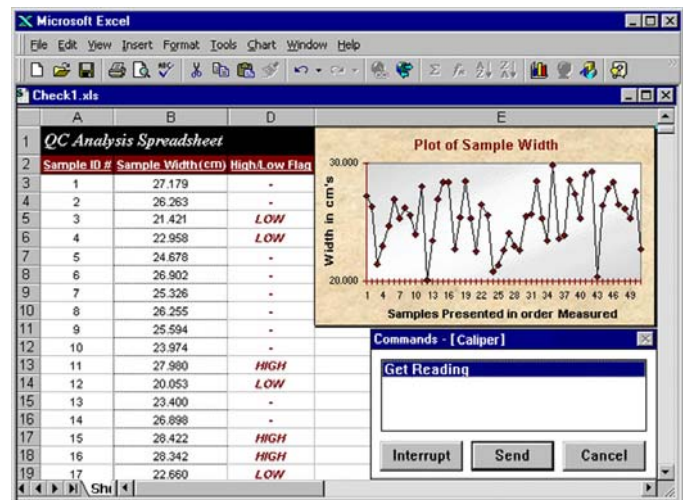
BalanceTalk includes pre-configured Excel® spreadsheet templates for moisture analysis, check weighing, density measurement, content uniformity, difference and counting, sieving and drying. There are also templates specific to the wastewater industry. These include Total % Solids (2540B), Total Suspended Solids (2540D) and Total Volatile Solids (2540E).

More than just a data collection package – BalanceTalk is a ready to use automation solution.



Automatically Controls the Balance

Balances that support bi-directional commands can be controlled directly from BalanceTalk using a floating Command dialog box. These commands can be used to request readings at regular intervals, tare your balance and even initiate a remote calibration.



Moisture analysis is easy when your balance is controlled with BalanceTalk.

Sends Data to Multiple Destinations

BalanceTalk can send data to any combination of four possible destinations. A different parser can be applied to the data for each destination.

Send Data Directly to Any Application

Any program that allows you to *manually* enter data can receive data *directly* from BalanceTalk.

Build a File

Data can be sent directly to a specified disk file for later import to other applications.

Display Data on Your Monitor

Your balance data can be directed to display on the PC monitor. In applications where the data is being sent to a file destination, the monitor display can be used to allow the operator to confirm the accuracy of the data being sent.

Use the BalanceTalk Internal Spreadsheet

BalanceTalk includes its own built-in spreadsheet program, which can be used to capture, view and print results. The data in the spreadsheet can be copied and pasted into other programs.

Adds Date and Time Stamps to Data

A date or time stamp showing exactly when the data was collected can be automatically added to your data. A cumulative time and date stamp is also available to record when a data point was collected, relative to the start of data collection. Both of these are available in a variety of formats.

Accepts Input from the Analyst

User-defined prompts for information such as operator name, product description or batch number can be incorporated into your application. At run time, BalanceTalk prompts the user to enter this information, which is then added automatically to the data.

Specifications

Data Destinations

- Integrated spreadsheet
- Disk files on local and network drives
- BalanceTalk real-time display window
- Any Windows® application

Program Start-up Capabilities

- Automatically start instruments when BalanceTalk is activated
- Start selected instruments from instrument list
- Automatically launch the destination application

Integrated Spreadsheet

- Combine data from multiple instruments
- Edit instrument data
- Enters sample IDs using the keyboard
- Create reports
- Display a unique spreadsheet for each device
- Format data - decimals, fonts, font size, color, alignment

Bi-directional Instrument Control

- Send commands directly from your application
- Choose commands from a user-defined list
- Configure up to 20 commands per balance
- Send time cycled commands
- Send commands automatically on receipt of instrument data

Data Processing Capabilities

- Parse and filter balance data
- Parse and filter ASCII data files
- Cumulative time stamp
- Current time stamp
- Date stamping
- User-defined prompts
- Counter function - count incoming data points
- Computer "BEEP" on receipt of balance data

Product Support

- Fully documented User's Manual
- On-line Help system

Minimum System Requirements

- Windows® 95, Windows® 98, Windows® NT 4.0, Windows® 2000 or Windows® XP
- Pentium 166, 16 MB RAM

LABTRONICS INC.